

ELLEN LYNCH

---



EPHEMERAL

CATALOG

*Images are limited to editions of three.  
Giclée prints are available in sizes up to  
approximately 5' and are priced accordingly.*

---

STUDIO@ELLENLYNCH.COM  
208.390.9088

ARTIST STATEMENT

The Earth took me in, held me and taught me the wonder of my senses. To see beyond clouds to fantastic beings, to hear the weather in the wind, to smell the stories of trees, animals and streams, and to feel the soft mosses, waxy leaves and sun-warmed stones with my soul.

The Earth showed me that special things can happen at any time, taking my breath away. Ephemeral moments and light that will never exist in exactly the same way again, inspire me to savor and preserve them in photographs.

Horses have always ignited my imagination. I'm fascinated by their duality—their wild spirit and power coupled with their gentle, grass-eating ways. They are ethereal beings, yet grounded firmly on the earth. They have been easy partners and subjects in my work due to my deeply felt connection with them.

Their innate qualities inspired this series of platinum/palladium prints, an historic process developed two hundred years ago, coupled with negatives made of my digital files—a partnership of old and new technologies. Simply watching the images appear on the coated paper, feels like horse magic. And, as the most archival photographic process, because the image is embedded in the fibers of the paper, they offer a reflection of the enduring trust and connection I've been fortunate enough to experience with them.

In offering my images, I share my veneration for horses and our home. I share that place in myself that is of the Earth. I share a reminder to look up, to look down and to look within.



# ELLEN LYNCH

---

## BIOGRAPHY

Ellen Lynch was raised in a rural community in Western New York, where forests, fields, and the dairy farm where she worked from the age of seven, fostered her curiosity and innate embrace of the natural world. Trees and creeks were her playground, and dogs, cats, horses and cows her companions.

Ellen's family of perpetual crafters and makers nurtured her creativity. Gifts and toys were made rather than purchased, playing outside was the norm, and rainy days produced plays or birdhouses made of popsicle sticks. It seemed natural to enter college as an art major, and Ellen received her fine arts degree from the State University of New York at Purchase. Upon graduating, sensing the need for a larger world, she pursued her career as a graphic designer in New York City.



TONY STROMBERG

After a decade of relishing the City, and having earned acclaim in her field, Ellen was called back to the natural world, relocating to the Teton Mountains in southeast Idaho. While maintaining her client base in New York, she wandered the mountains on horseback, camera in tow, capturing the grandeur of the granite peaks, the dramatic skies, and the animals who make their home there. She also established a cattle ranch and enjoyed being “the camera cowgirl.”

Today, Ellen makes her home in New York's Hudson Valley, visiting the West and the new settings as often as possible. Dramatically different landscapes keep her eyes fresh in an ongoing search for ways of seeing, capturing and sharing the world around her.

Ellen's work has been exhibited throughout the United States and she is thrilled to be sharing her images and process in the studio gallery.

\$700



1. Dakota Mares  
P/P (Platinum/Palladium  
Print)  
Frame: 16 7/8" x 12 1/4"  
\$350



7. Shire Tale  
P/P  
Framed: 19" x 16 1/4"  
\$650



2. To Be Seen  
P/P  
Frame: 15 3/4" x 11 1/2"  
\$400



8. Wild  
P/P  
Framed: 16" x 16 1/4"  
\$600



3. Stable Sage  
P/P  
Frame: 14 3/4" x 15"  
\$450



9. Fluid Geometry  
P/P  
Framed: 13 7/8" x 14 1/8"  
\$550



4. Soft Neck  
P/P  
Frame: 17 1/2" x 15 3/8"  
\$500



10. Waiting  
P/P  
Framed: 16 7/8" x 13 1/2"  
\$500



5. Strength  
P/P  
Framed: 18" x 15 1/8"  
\$600



11. Dust Storm  
P/P  
Framed: 16 1/4" x 12"  
\$450



6. Outracing His Shadow  
P/P  
Framed: 21 3/4" x 15 3/8"



12. *White Cloud Chases the Moon*  
Giclée on Hahnemuhle  
Image: 22 1/2" x 18"  
\$500



13. *Red Strength*  
Giclée on Hahnemuhle  
Image: 22" x 19"  
\$500



14. *Alabaster Glaze*  
Giclée on Hahnemuhle  
Image: 18" x 18"  
\$500



15. *Cremello Views*  
Giclée on Hahnemuhle  
Image: 19 1/4" x 19 1/4"  
\$500



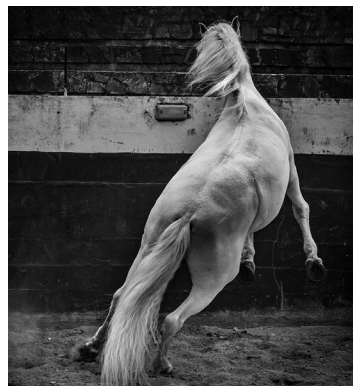
16. *Yellow Dust*  
Giclée on Exhibition Fiber  
Image: 19" x 19"  
\$500



17. *Green Drum*  
Giclée on Exhibition Fiber  
Image: 19" x 19"  
\$700



18. *Falling Slowly*  
P/P  
Image: 8 3/8" x 8 7/8"  
\$300



19. *Curve*  
P/P  
Image: 9 1/4" x 9 1/4"  
\$350



20. He Lead With His Pride  
P/P  
Image: 8 1/4" x 10 1/4"  
\$450



21. Wild Mare  
P/P  
Image: 9 3/16" x 9 3/16"  
\$400



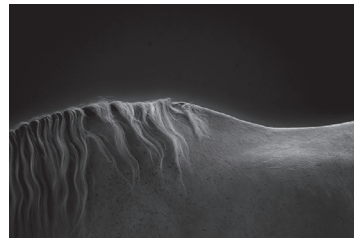
22. Alabaster Light  
P/P  
Image: 9 1/4" x 9 1/4"  
\$350



23. Yellow Wall  
Giclée on  
Hahnemuhle  
Image: 31 1/2" x 19"  
\$550



24. He Wondered Why  
Giclée on  
Exhibition Fiber  
Image: 22 1/3" x 18"  
\$600



25. Of the Earth  
Giclée on  
Hahnemuhle  
Image: 28 1/2" x 19"  
\$600



26. Shire Tale  
Giclée on  
Hahnemuhle  
Image: 52 1/4" x 32"  
\$1,400



27. Carrara Muscle  
Giclée on  
Hahnemuhle  
Image: 27" x 19"  
\$550



28. Garnet Grace  
Giclée on  
Hahnemuhle  
Image: 26 1/4" x 18"  
\$55